

# Kaymar

## Fitting Instructions



Vehicle Colorado RG LS  
Year  
Type Ute  
Part Rear Bar

### Applicable to Part Numbers

K3985, KITRG-LS, KITRG-LS-L-JCD, KITRG-LS-R-JCD

Date published March 21, 2019

## IMPORTANT - BEFORE COMMENCING INSTALLATION

Please verify the part number corresponds with the list above.

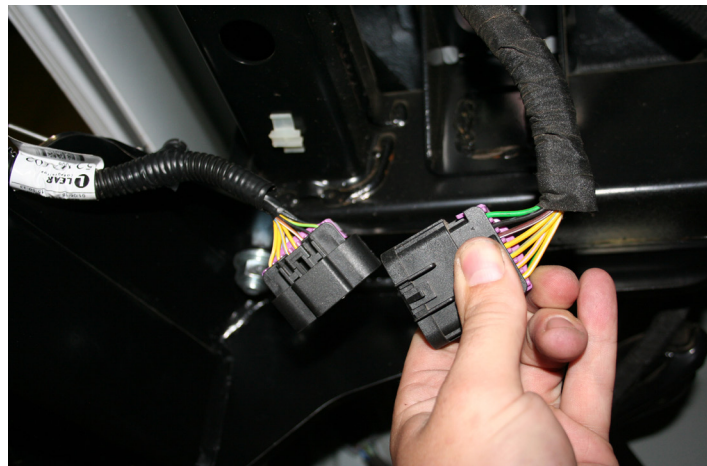
Read through these instructions and check items in the supplied fitting kit matches the attached list.

Every effort is made to ensure instructions are as accurate as possible at the time of publishing however work should not be commenced until the document has been thoroughly read, measurements checked and all components in the package verified as complete. Kaymar has used reasonable care in preparing the information included in these documents, but makes no representations or warranties as to the completeness or accuracy of the information. Information is supplied upon the condition that the persons receiving the information will make their own determination as to its suitability for their purposes prior to use. Kaymar assumes no liability whatsoever for any damages incurred by you resulting from errors in or omissions from the information included herein. Kaymar reserves the right to make changes without further notice to any products to improve reliability, function or design.

## HOLDEN COLORADO RG LS DUAL CAB UTE

CHECK THAT THE TUB IS SQUARE ON THE CHASSIS

1. Unplug sensor harness and camera to remove bumper and towbar if fitted.



# Kaymar

## Fitting Instructions

2. Remove sensors from the sensor retainers using a flat blade screw driver. Place the screw driver between the sensor and the retainer at the top, twist slightly to release the sensor. Do this to all four sensors.



3. Remove numberplate lights and unplug the camera from the harness. Unclip and remove the harness from the bumper.
4. Remove retainers from the bumper by gently pushing in top and bottom tabs. Take note which position they came out of.
5. Fit the sensor retainers into the Kaymar bar then refit the sensors and the harness. (NOTE: Do not cut or alter numberplate light wiring as the vehicle may detect a fault)
6. If relocating the rear camera - undo the the rear panel on the tail gate to access the camera.



# Kaymar

## Fitting Instructions

7. Using a 10mm socket undo the two bolts holding the plastic handle cover. Unscrew the two screws holding the camera in place. Unclip the camera harness and pull it back out through the tail gate. Refit the handle cover and using the grommet supplied plug the hole where the camera was located.



8. Remove the plastic retaining bracket from the camera by removing three screws, taking note which way the camera is facing up.

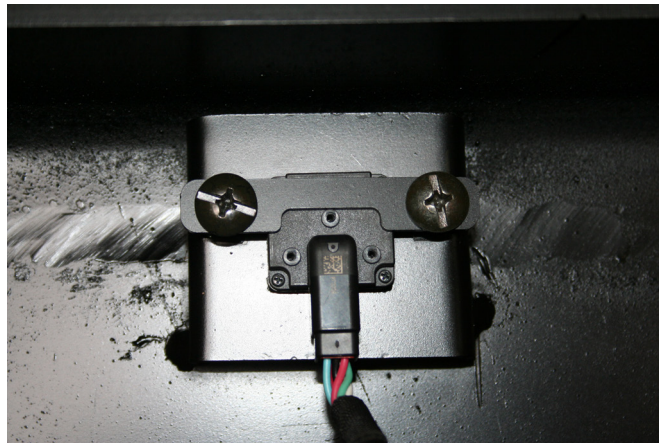
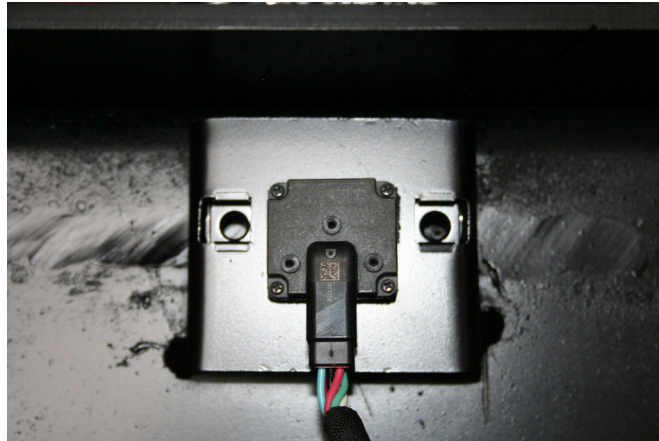




# Kaymar

## Fitting Instructions

- Fit the camera into the Kaymar bar securing using the clamping plate supplied. Apply a bit of thread locker to the M6 x 20 screws provided and clamp camera in position. Do up firmly but don't over tighten.



- With another person, lift the Kaymar bar onto vehicle, being careful not to touch the tub.
- Fit 8 x M12 x 1.25 x 35 bolt, spring and flat washer (4 x either side) to captive nuts inside chassis. **(DO NOT TIGHTEN)**



- From inside of chassis, fit 4 x bolt on wire (2 x either side), through the chassis and support gusset in bar. Secure using M12 flat, spring washer and nut. **TIGHTEN THESE BOLTS FIRST** and then remaining 8 in sides of chassis.

# Kaymar

## Fitting Instructions

13. Splice wiring into trailer harness, using table below

Left hand Indicator	Yellow
Right hand Indicator	Green
Stop	Red
Tail	Brown
Reverse	Black
Earth	White

Plug the sensor harness and camera back into the vehicle harness.

14. Fit chequer plate using thin bead of silicon along underside of chequer plate curved edge. Place rubber strip along edge. Place another thin bead of silicon on rubber strip. Fit to bar using stainless steel hex head screws and M6 flange nuts.
14. If carrier or jerry can holder to be fitted. See separate fitting sheet.



# Kaymar

## Fitting Instructions

### BK3985 LS RG COLORADO

QUANTITY	DESCRIPTION
8	BOLT M12 X 35 X 1.25 FINE THREAD
4	BOLT ON WIRE M12 X 30 X 1.75 150 MM WIRE
12	WASHER FLAT M12 X 30 HD
12	WASHER SPRING M12
4	NUT M12 X 1.75
10	WIRE CONNECTOR FEMALE
10	WIRE CONNECTOR MALE
1	WIRE TRAILER 7 CORE 1300 MM LENGTH
1	BLANKING GROMMET BH020
1	CLAMPING PLATE L691D
2	M6 x 20 ROOF BOLTS
2	M6 FLAT WASHERS
2	M6 SPRING WASHERS



*bolt\_on\_wire\_M12x30x1.75\_150mm\_wire*



*L691D\_clamping\_plate*

**BK3985 LS RG COLORADO**



*bolt\_on\_wire\_M12x30x1.75\_150mm\_wire*



*L691D\_clamping\_plate*